



THE TRAVEL CLUB

ROMANTIC RHINE CRUISE

Northbound: Basel to Amsterdam

10 DAYS: Thursday, October 10-Saturday, October Day 19, 2019

from \$3,628 per person double occupancy for Deluxe Stateroom, Category E

Cabin upgrades available: Additional \$199-\$2,199 pp/do. Includes cruise taxes and port charges and pre-paid cruise gratuities and Avalon insurance. Prices listed above DO NOT include airfare. Airfare price available at time of booking. When you reserve your Avalon Waterways cruise with The Travel Club, any current Avalon promotion will be applicable to your reservation.

One of Europe's most legendary rivers awaits you on this exciting journey along the Rhine River, which begins in Switzerland and stops in France, Germany, and Holland! Board your vessel in Basel, Switzerland, then head for Breisach, Germany, located at the foot of the Kaiserstuhl Mountain on the French-German border. Here you'll find the gateway to Germany's Black Forest, an area of unrivaled natural beauty, best known for Black Forest ham, cherry cake, and the cuckoo clock. Continue your river cruise to Strasbourg, France, where you'll be amazed by the red-sandstone gothic cathedral with ancient murals and the fascinating astronomical clock. Also, stroll through the lovely La Petite France district with its quaint shops, delightful bistros, and peaceful waterfront promenade. Visit the ruins of Heidelberg's castle, towering magnificently over the city, and stop in Mainz for a guided walk and a visit to the captivating Gutenberg Museum. Next up is the charming wine town of Rudesheim, and a visit to the unique Siegfried's Mechanical Musical Instrument Museum to see the impressive collection of historical self-playing instruments. You'll pass through the dramatic Rhine Gorge—the most beautiful stretch of the Rhine River where ancient castles stand on cliffs 400 feet above the water. Last stop in Germany is Cologne—a 2,000-year-old city known for its gothic architecture and famous twin-spired cathedral. As an exclamation point to this wonderful Rhine river cruise, you'll spend time in Holland's popular, modern capital of Amsterdam. There is much to do with the world-famous museums and abundance of restaurants amongst the classic architecture and charming canals. The best way to see the treasures of this 700-year-old city is on a canal cruise along the elegant grachten lined with homes dating back to the city's "Golden Age."

Day 1 Overnight flight from Boston

Day 2 Arrive Zurich, Switzerland
Transfer to hotel

Day 3 Transfer to Basel, board ship
Onboard welcome reception

Day 4 Breisach. Excursion to Black Forest: Choice of excursion to Black Forest, or guided tour in Colmar

Day 5 Strasbourg: Guided sightseeing, visit La Petite France district and the gothic cathedral

Day 6 Excursion to Heidelberg. Mainz: Guided tour of Heidelberg Castle, see the Great Vat; visit the Gutenberg Museum in Mainz

Day 7 Rudesheim-Rhine Gorge-Koblenz: Visit Siegfried's Mechanical Musical Instrument Museum in Rudesheim; special treat; scenic cruise through the Rhine Gorge; guided walk in Koblenz

Day 8 Cologne: Choice of "Cologne Highlights" walking tour, or Jewish Heritage walking tour

Day 9 Amsterdam: Canal cruise

Day 10 Amsterdam (Disembarkation): Your vacation ends this morning
Return flight to Boston



DAY-BY-DAY ITINERARY

- Day 1** Overnight flight from Boston
Day 2 Arrive Zurich, transfer to hotel accommodations in Zurich
Day 3 (D) Transfer from hotel to BASEL, SWITZERLAND (EMBARKATION)

Welcome to Basel. Your Suite Ship® is Ready for Boarding.

Flights into Zürich must arrive by 3 pm.

Guests must be on board ship by 5 pm.

Enjoy dinner and explore the ship on your first night on board.

EVENING CRUISE TO BREISACH

Day 4 (B, L, D) BREISACH, GERMANY. EXCURSION TO THE BLACK FOREST

History, Artistry, and the Beautiful Black Forest

Classic

Visit the charming village of Colmar on a Guided Tour of its half-timbered medieval and early renaissance buildings, OR:

Discovery

Join a full-day Guided Excursion to the magical Black Forest to experience the Vogtsbauernhof open-air-museum, visit an authentic water mill, and see a traditional Bavarian butter-making demonstration.

Explore on your own this afternoon taking a bike from the ship or hiking up to St. Stephan's Cathedral.

EVENING CRUISE TO STRASBOURG

Day 5 (B, L, D) STRASBOURG, FRANCE

Gothic Giants, Military Marvels, and Varietal Vintages

Classic

Come along for City Sightseeing, including the city's gothic, stained-glass cathedral with its celebrated ancient murals and astronomical clock, and the magical La Petite France District.

You may choose to join a Guided Optional Excursion to the splendid Alsace wine country, or to the historic Maginot Line—an impressive installation of pre-WWII defensive fortifications designed to protect the eastern border of France.

Alternatively, enjoy a free afternoon sampling the local cuisine in Place Kléber, or pay a visit to one of Strasbourg's many wonderful museums.

EVENING/OVERNIGHT CRUISE TO LUDWIGSHAFEN

Day 6 (B, L, D) LUDWIGSHAFEN, GERMANY. EXCURSION TO HEIDELBERG

Castle Walls and the World's Biggest Barrel of Wine

Classic

Enjoy a Guided Tour to Heidelberg Castle to see the ruins of the magnificent renaissance treasure towering above the city, and its famed Great Vat, the "World's Largest Wine Barrel," OR:

Active

Join your Avalon Adventure Host for a hike up Philosophers' Way for an inspiring view of the city below.

Enjoy a brief cruise to Mainz this afternoon.

MAINZ

Turning the Pages of History

Classic

Enjoy a Guided City Walk including a visit to the Gutenberg Museum to see the captivating history of printing.

Enjoy live entertainment on board your ship this evening.

OVERNIGHT DOCKING IN MAINZ

Day 7 (B, L, D) RÜDESHEIM—RHINE GORGE

Eat, Drink, and Be Merry in Wine Country

Discovery

Take a Guided Tour of the incredible Mechanical Music Museum for a one-of-a-kind instrumental experience, OR:

Active

Take a Guided Hike through the vineyards with your Adventure Host, and enjoy the view with a cable car ride back down.

Discovery

Based on your departure date, enjoy either a Coffee Tasting or a Wine Tasting.

Relax on the Sky Deck for an afternoon cruise through the spectacular Rhine Gorge to Koblenz. Sail past the legendary rock of The Lorelei—where the siren of mythology sang songs to lure ill-fated sailors.

KOBLENZ

Travel Through 2,000 Years Of Monumental History

Classic

Take a Guided City Walk amid ancient fortress walls, towers, squares, and monuments.

OVERNIGHT DOCKING IN KOBLENZ

Day 8 (B, L, D) COLOGNE

Prost! Celebrate in the Rhineland's Capital City

Active

Join a Guided Walk with your Avalon Adventure Host this morning, OR:

Classic

Take a Guided City Walk of Cologne—with its soaring twin-steepled gothic cathedral, OR:

Discovery

Choose a Guided Walking Tour of Cologne's important Jewish heritage sites.

Don't miss the chance to enjoy free time over a glass of Kölsch pale lager—locally brewed for over 100 years!

AFTERNOON/OVERNIGHT CRUISE TO AMSTERDAM

Day 9 (B, L, D) AMSTERDAM, HOLLAND

Colorful Amsterdam—with Canals, Crooked Houses, and Cuisine of a Golden Age

Classic

Explore the iconic waterways of Amsterdam on a Guided Canal Cruise past stately homes of Amsterdam's "Golden Age."

Join a Guided Optional Excursion to Zaanse Schans to see historic windmills and charming Dutch houses.

OVERNIGHT DOCKING IN AMSTERDAM

Day 10 (B) AMSTERDAM (DISEMBARKATION)

Your vacation ends with breakfast this morning. Return transfer to the airport for your flight to Boston.

Notes

In the event of water level problems or any problems of a technical nature, it may be necessary to operate the itinerary by motorcoach or to alter the program.

Included visits and special features are subject to change. If a change is necessary, a substitute will be offered.

You've always forged your own path...with your own distinct perspective of looking at the world. Avalon Waterways presents a river cruise experience with your unique style in mind—offering expansive views and wider perspectives. That's why we've designed a cruise experience that's just a bit different.

Here are just some of the features and amenities you'll experience on board our Avalon ships.

Throughout the Ship:

Complimentary Wi-Fi

Panoramic windows

Elegant, contemporary design & decor

Friendly, English-speaking crew & Cruise Director

Sky Deck with whirlpool, shade awnings, game area and premium lounges

Covered Observation Lounge

Club Lounge with 24-hour self-serve beverage station with complimentary cappuccinos, lattes, tea, hot chocolate & premium coffees, as well as treats throughout the day

Suites & Staterooms:

Comfort Collection BedsSM with choice of mattress firmness

Egyptian super-combed cotton linens

Bathrobes & slippers

Premium L'Occitane bath products

Large bathroom featuring shower with glass door

Flatscreen satellite TV with free movie channels

Individual climate control and in-room safe

USB Ports

Complimentary bottled water daily

Health & Fitness:

Bikes

Canoe, kayak and jogging excursions

Maps for hiking, biking and jogging routes

Fitness and wellness activities

Fitbits®

All through your Avalon Adventure HostSM

Dining

FlexDiningSM for more venue and seating options, including flexible seating times in our main Dining Room

Avalon Fresh® healthy cuisine options at every meal

Complimentary sparkling wine with breakfast; wine, beer, or soft drinks with every lunch and dinner

Early and Late Riser breakfast options
Daily full buffet breakfast with made-to-order egg station, hot and cold menu items
Daily lunch buffet with pasta or carving stations
Alternative light lunch or Sky Grill on the Sky Deck (weather permitting)
Daily Afternoon Tea featuring tea, coffee, sweet treats & sandwiches
Daily four-course a la carte dinner in the main Dining Room with choice of appetizers, soups, salads, entrees and desserts. Includes selections of regional recipes, Western dishes and vegetarian options.
Enjoy a tasting menu with a view in the Panorama Bistro - a less formal "sit-down" atmosphere while mingling over several satisfying selections
Captain's welcome & farewell receptions and dinners with sparkling wine and canapés
Panorama Lounge featuring premium spirits and Avalon specialty cocktails, along with local entertainment special guests
Cocktails available on the Sky Deck
Fresh fruit available throughout the day

Avalon has designed included activities with a choice of experiences. We invite you to select the tours, activities, and events that interest you most, so you can experience your cruise your way. There are 3 types of included shore excursion on every Europe cruise:

Classic

Your local expert is ready to guide you through the history and heritage of local destinations. You'll marvel at the legends, lore, and spectacular architecture of iconic and historic sites.

Discovery

We've found inspiring and interactive activities to speak to your interests - from cooking classes, to painting workshops - to immerse yourself in each culture you explore.

Active

Embark on energetic excursions to keep you in motion and on the go - from a guided jogging tour of Amsterdam, to biking, paddling, and hiking your way through scenic locales.

Vista

The Avalon Vista's two full decks of suites feature Wall-to-Wall Panoramic Windows that transform the living space into a unique Open-Air BalconySM. Enjoy fresh breezes and enchanting scenery from the comfort of your suite. With 200 square feet, Panorama SuitesSM are more than 30% larger than the industry standard, affording you the incomparable opportunity to wake each morning facing the splendid passing scenery. Onboard amenities include a Fitness Center, complimentary computer use in public areas and Wi-Fi access, and a spacious Sky Deck with premium lounge chairs, shade system, whirlpool, and the delightful Sky Bistro.

Ship Amenities

- Wall-to-Wall Panoramic Windows
- Sky Deck with premium lounge chairs, whirlpool, shade awnings, & outdoor deck game area
- State-of-the-art fitness center
- Non-smoking staterooms & ship interior
- Convenient Elevator Service
- Elegant, contemporary design
- Outside viewing deck
- Headsets for guided shore excursions in Europe
- English-speaking friendly crew, staff & professional Cruise Director
- Sightseeing with Expert Local Guides
- Onboard lectures, activities & entertainment
- Room service for Continental breakfast & beverages (service fee applies)
- Sky Deck whirlpool

- Complimentary computer use in public areas
- Hair salon
- Complimentary Wi-Fi access
- Additional biking excursions available in Amsterdam, Breisach and Bernkastel
- Onboard Adventure Center with active gear, bikes, Nordic walking sticks, watercraft & maps
- Light lunch & casual dinner in the Panorama Bistro
- Avalon Choice® cruising experience
- Behind-the-scenes galley tour
- Choice of Leisurely, Traditional or Independent sightseeing pace options
- Nordic walking sticks available onboard for complimentary check-out
- Onshore & Onboard experiences with regional customs, cultures & tastings with local artisans, experts & entertainers
- Flatscreen satellite TV with English-speaking channels & over 100 free movie options
- Onboard assistance is available to recommend, reserve and further personalize your cruise
- Linger over several selections from the Panorama Bistro's tasting menu for a less formal "sit-down" atmosphere
- Sky Deck game area
- Self-serve beverage station with complimentary tea, hot chocolate & premium coffees, including decaf options
- Well-stocked library with books, cards, and board games
- Complimentary bottled water, fresh fruit, and cookies available throughout the day
- Full-size closet mirror

Included Amenities

Avalon Suite Fleet

Complimentary Wi-Fi throughout the ship

Panoramic windows throughout the ship

Elegant, contemporary design & decor

Friendly, English-speaking crew & Cruise Director

Sky Deck with whirlpool, shade awnings, game area and premium lounges

Covered Observation Lounge

Club Lounge with 24-hour self-serve beverage station with complimentary cappuccinos, lattes, tea, hot chocolate & premium coffees, as well as treats throughout the day

Elevator

Non-smoking interior and staterooms

Fitness & Wellness

Fitness Center

Avalon Adventure Center

Your place for active gear and excursions, including

Bikes

Canoe, kayak and jogging excursions

Maps for hiking, biking and jogging routes

Fitness and wellness activities

FitBits®

All through your Avalon Adventure HostSM

Active shore excursions, both included and optional

Avalon Panorama Suites & Staterooms

Open-Air BalconiesSM and Wall-to-Wall Panoramic Windows in all Panorama Suites

Comfort Collection BedsSM with choice of mattress firmness

Egyptian super-combed cotton linens

- Bathrobes & slippers
- Premium L'Occitane bath products & hairdryer
- Large bathroom featuring shower with glass door
- Wide selection of free movie channels and English-speaking TV
- Individual climate control and in-room safe
- Full-size closet and mirror
- Additional under-bed storage
- Complimentary bottled water daily

STATEROOMS & SUITES

Avalon Deluxe Stateroom (Cat. D, E) - 172 sq. ft.



PHOTO SHOWN IS REPRESENTATIVE OF A STATEROOM IN THE CATEGORY



Features

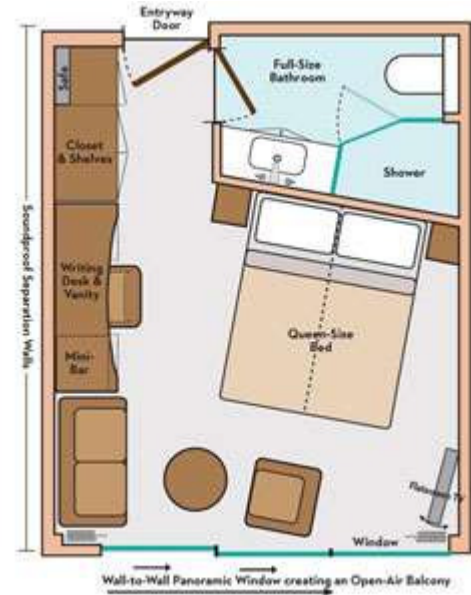
- Comfort Collection BedsSM
- Egyptian super-combed cotton linens
- Soft & firm pillows
- Choice of bed configuration
- Bedside tables with reading lamps
- L'Occitane bath products
- Easy under-bed luggage storage
- Alarm clock
- Bathrobes & slippers
- Complimentary bottled water
- Individual climate control
- Large mirror in bathroom
- USB Ports
- Full shower with glass door
- Vanity and lighted makeup mirror
- Luxurious mattress toppers
- European-style duvets
- Extra blankets
- Nightly turn-down service
- Hairdryer
- Spacious 3-door closets with shelves for ample storage
- Flatscreen satellite TV with English-speaking channels & over 100 free movie options
- Direct-dial telephone

- Well-stocked minibar
- In-room safe
- Elegant, contemporary design
- Complimentary Wi-Fi
- Two windows
- Writing desk and chair

Panorama Suite (Cat. A, B, P) - 200 sq. ft.



PHOTO SHOWN IS REPRESENTATIVE OF A STATEROOM IN THE CATEGORY



Features

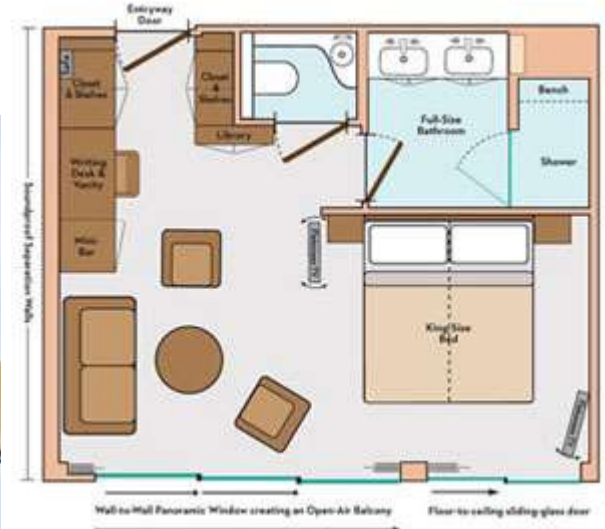
- Comfort Collection BedsSM
- Egyptian super-combed cotton linens
- Soft & firm pillows
- Choice of bed configuration
- Bedside tables with reading lamps
- L'Occitane bath products
- Easy under-bed luggage storage
- Alarm clock
- Direct-dial telephone
- Well-stocked minibar
- In-room safe
- Elegant, contemporary design
- Marble countertops in bathroom
- USB Ports
- 6-person sitting area
- Writing desk and chair
- Sofa
- Luxurious mattress toppers
- European-style duvets
- Extra blankets
- Nightly turn-down service
- Hairdryer
- Spacious 3-door closets with shelves for ample storage
- Flatscreen satellite TV with English-speaking channels & over 100 free movie options
- Make-up mirror
- Bathrobes & slippers
- Complimentary bottled water

- Individual climate control
- Large mirror in bathroom
- Complimentary Wi-Fi
- Wall-to-Wall Panoramic Window with Open-Air BalconySM
- Full shower with glass door
- Vanity and lighted makeup mirror
- Coffee table

Royal Suite - 300 sq. ft.



PHOTO SHOWN IS REPRESENTATIVE OF A STATEROOM IN THE CATEGORY



Features

- Comfort Collection BedsSM
- Egyptian super-combed cotton linens
- Soft & firm pillows
- Choice of bed configuration
- Bedside tables with reading lamps
- L'Occitane bath products
- Easy under-bed luggage storage
- Alarm clock
- Direct-dial telephone
- Well-stocked minibar
- In-room safe
- Elegant, contemporary design
- Marble countertops in bathroom
- USB Ports
- 6-person sitting area
- Writing desk and chair
- Sofa
- Double sinks
- Luxurious mattress toppers
- European-style duvets
- Extra blankets
- Nightly turn-down service
- Hairdryer
- Spacious 3-door closets with shelves for ample storage
- Flatscreen satellite TV with English-speaking channels & over 100 free movie options
- Make-up mirror

- Bathrobes & slippers
- Complimentary bottled water
- Individual climate control
- Large mirror in bathroom
- Complimentary Wi-Fi
- Wall-to-Wall Panoramic Window with Open-Air BalconySM
- Full shower with glass door
- Vanity and lighted makeup mirror
- Coffee table

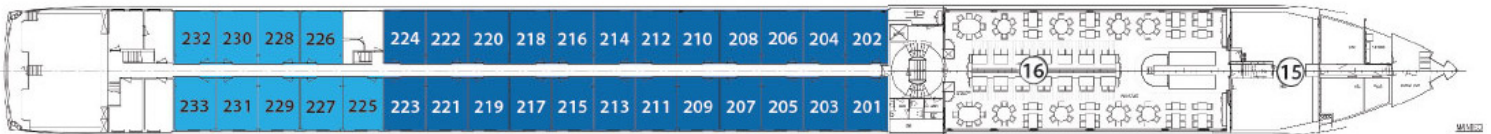
SKY DECK



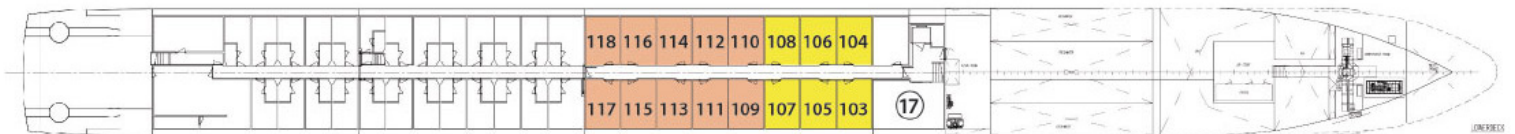
ROYAL DECK



SAPPHIRE DECK



INDIGO DECK



DECK PLAN

- | | | |
|---|----------------------|-------------------|
| 1 Sky Lounge | 6 Deck Game Area | 12 Elevator |
| 2 Navigation Bridge | 7 Observation Lounge | 13 Lobby |
| 3 Sky Grill | 8 Panorama Bistro | 14 Club Lounge |
| 4 Whirlpool | 9 Panorama Lounge | 15 Galley |
| 5 Premium Lounge
Chairs and Shade
Awnings | 10 Bar | 16 Dining Room |
| | 11 Reception | 17 Fitness Center |

CATEGORIES

- Royal Suite** Royal Deck | Royal Suites
- Cat. P** Royal Deck | Panorama Suites
- Cat. A** Sapphire Deck Forward | Panorama Suites
- Cat. B** Sapphire Deck Aft | Panorama Suites
- Cat. D** Indigo Deck Aft | Deluxe Staterooms
- Cat. E** Indigo Deck Forward | Deluxe Staterooms